

**Flexible Sigmoidoscopy
Screening Protocol
2/27/03**

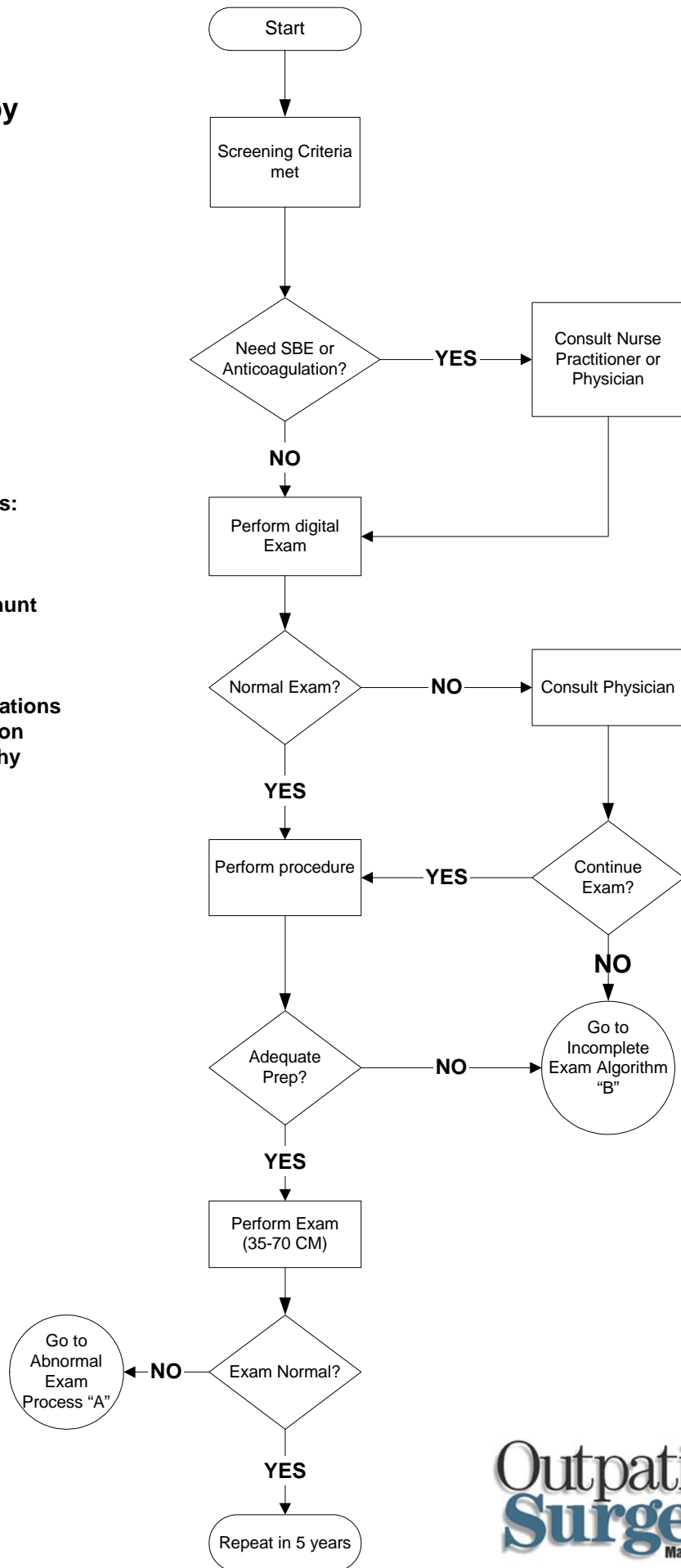
Indications for SBE prophylaxis:

High Risk

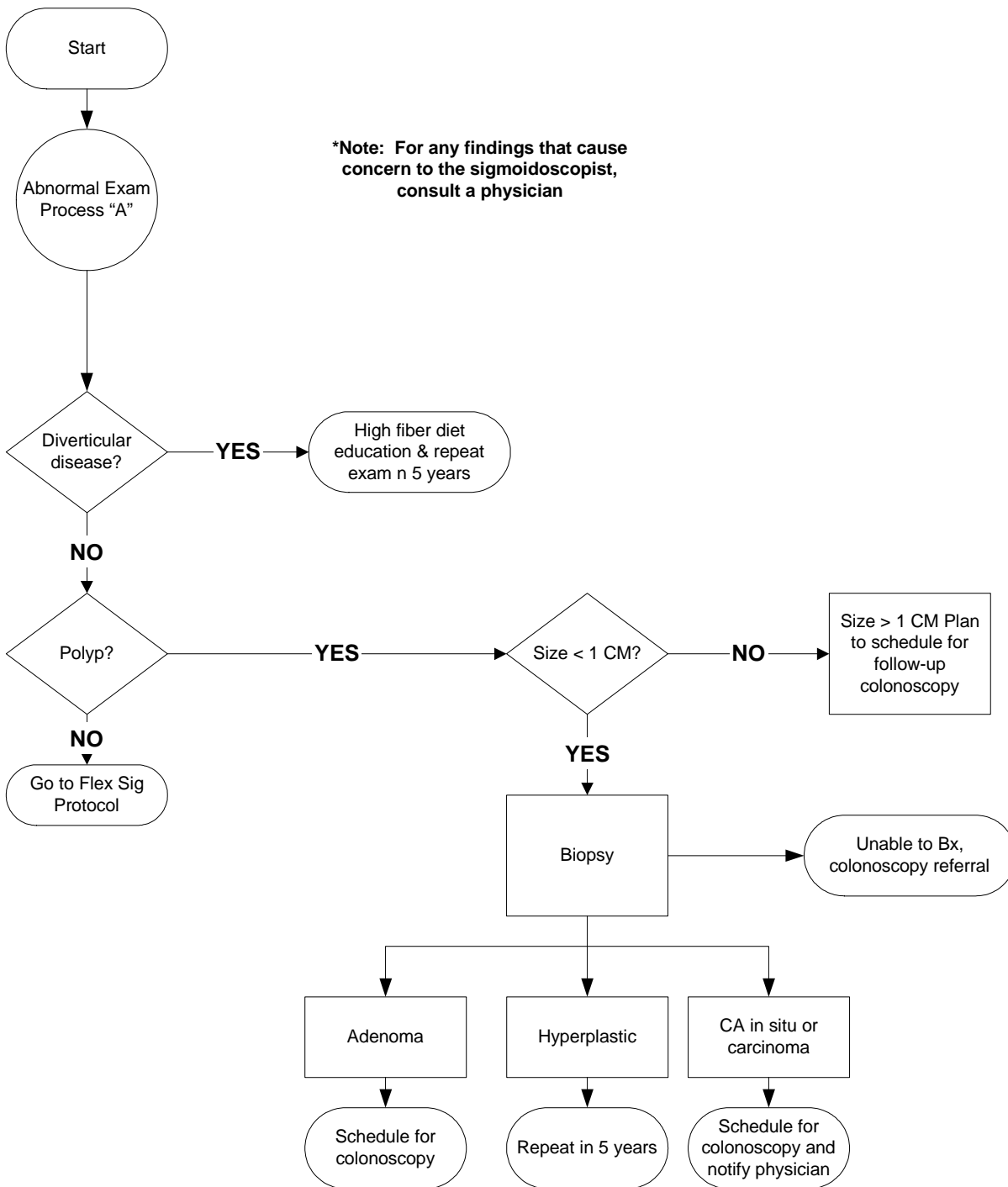
1. Prosthetic heart valves
2. Complex CHF pulmonary shunt
3. Surgical pulmonary shunt

Moderate Risk

1. Congenital cardiac malformations
2. Acquired valvular dysfunction
3. Hypertrophic cardiomyopathy
4. Mitral valve prolapse with valvular regurgitation



FLEXIBLE SIGMOIDOSCOPY ABNORMAL EXAM PROCESS "A"



Flexible Sigmoidoscopy Incomplete Exam Algorithm "B"

